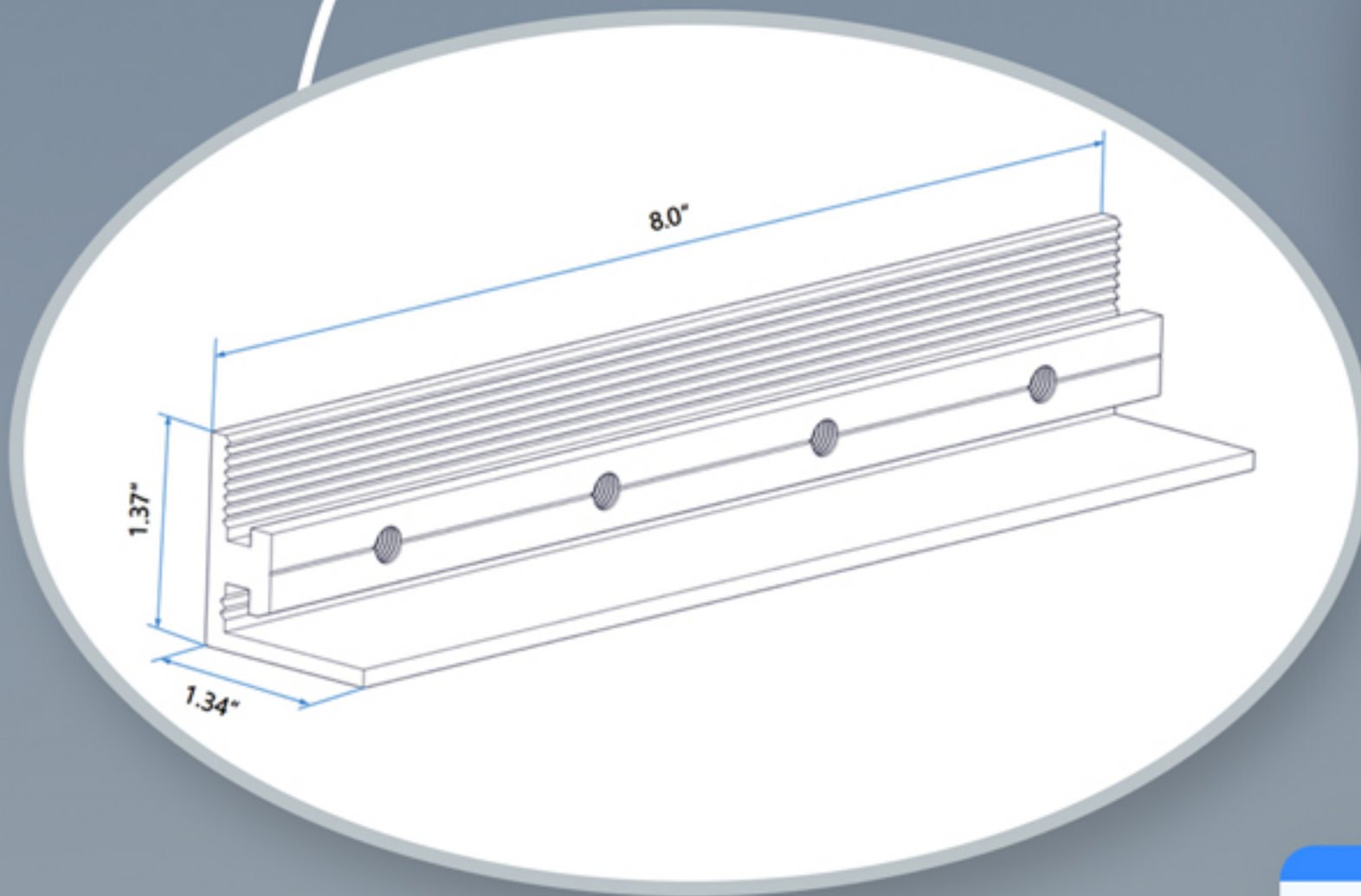
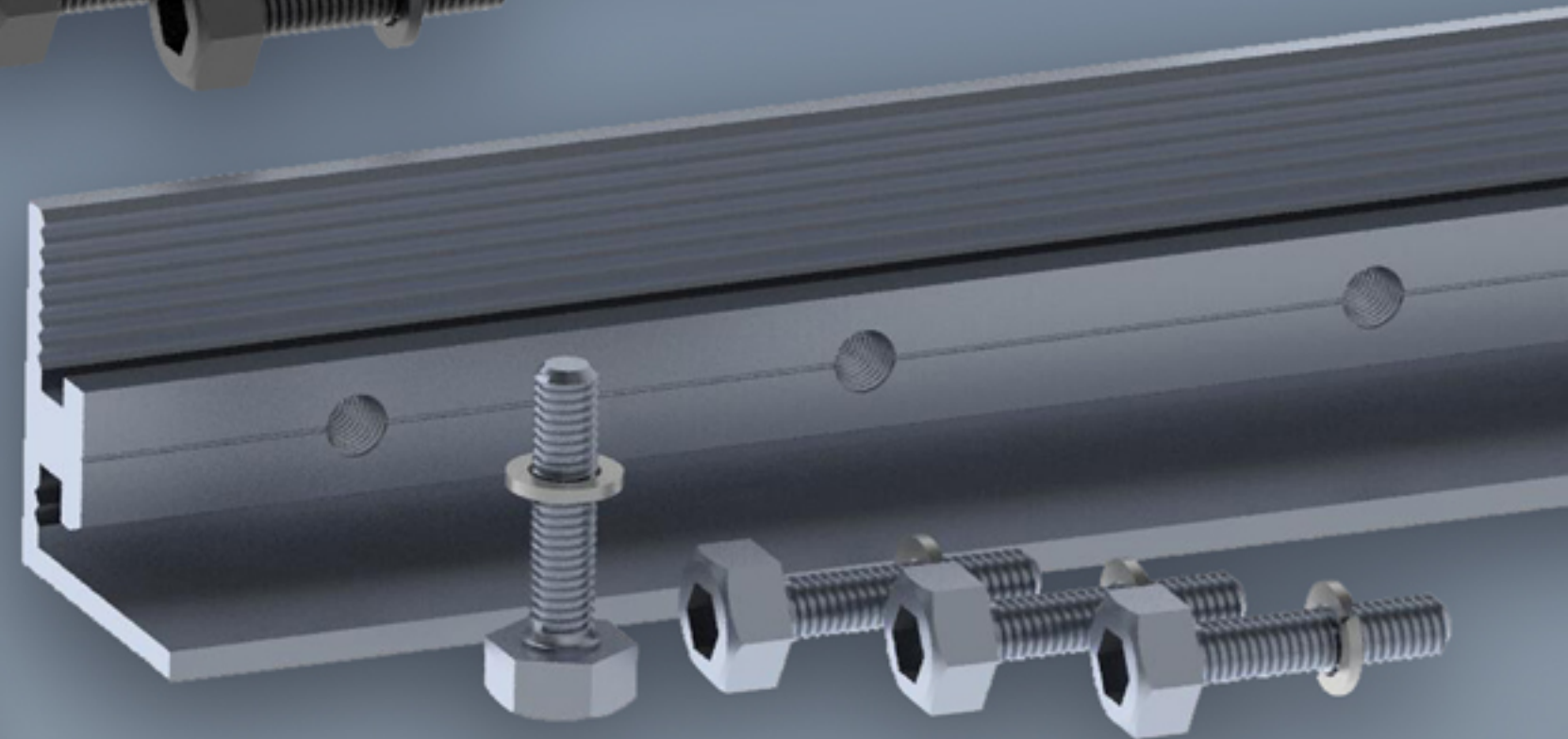
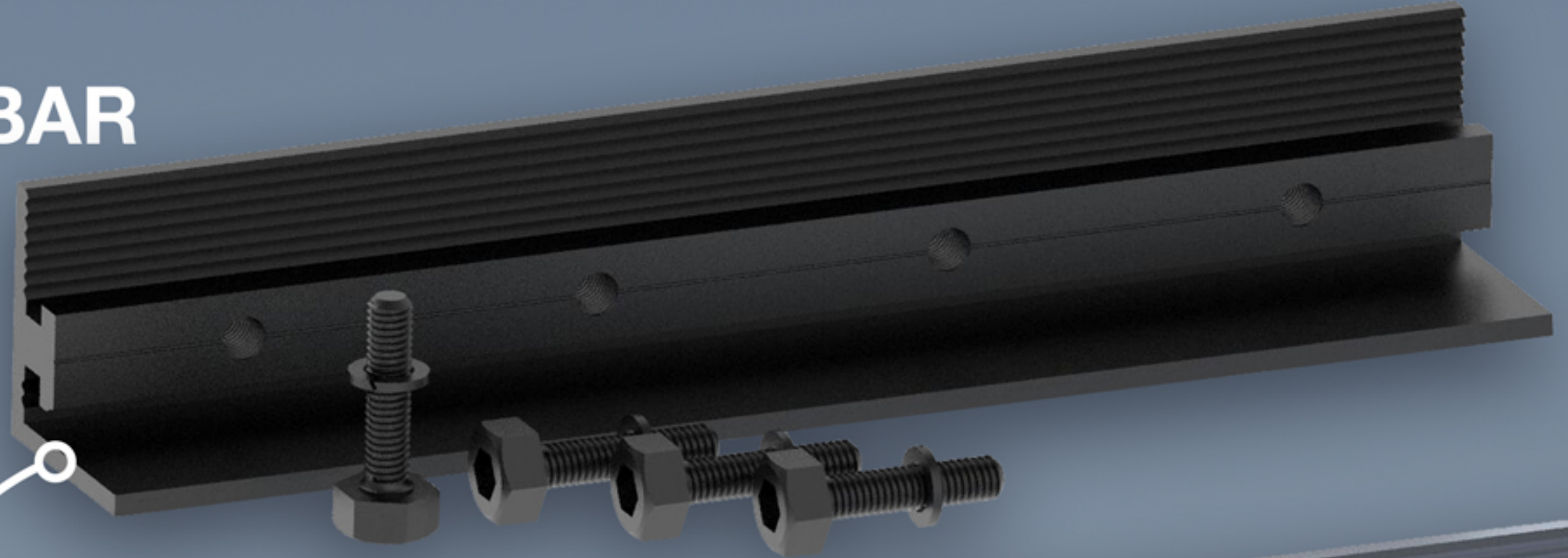


SPLICE BAR



SECURE BRILLIANCE

Elevate the reliability of your solar installations with the Dual Rack Splice Bar—an integral component designed for seamless connections that stand the test of time. Crafted from premium materials, including the corrosion-resistant combination of aluminum and stainless steel, our Splice Bar ensures enduring quality synonymous with the Dual Rack standard.

Experience the ease of installation as our Splice Bar swiftly fuses mounting rails together, offering not just convenience but a robust foundation for your solar array. Each Splice Bar is a testament to Dual Rack's commitment to excellence, arriving complete with self-tapping screws to further streamline your installation process. Choose Dual Rack Splice Bars for connections that not only endure but also redefine the standards of reliability in solar mounting solutions.

ADVANTAGES AND HIGHLIGHTS

- Advanced Dual Rack Design
- Compatible with DR Mounting System
- Installation Simplicity
- Time and Cost Savings
- Efficient Design
- Versatile Installation
- User Friendly
- Multiple Options and Aesthetics
- 20-year Limited Warranty
- Conforms to UL STD 2703
- ETL Certified
- Class A Fire Rated



■ PRODUCT SELECTION AND ITEM CHART

Component List		Product Line		
Material	QTY	Item #	Product Name	
Splice bar	1	DR-CSB-01	DR Splice Bar - Clear	
M8 Dual Hex bolt - 20mm	4	DR-BSB-01	DR Splice Bar - Black	

Ordering Specifics

Standard Package

10 pcs


Dimensions

8" x1.34" X 1.37"

Weight

0.430 lbs

ETL CLASSIFIED



US

Intertek

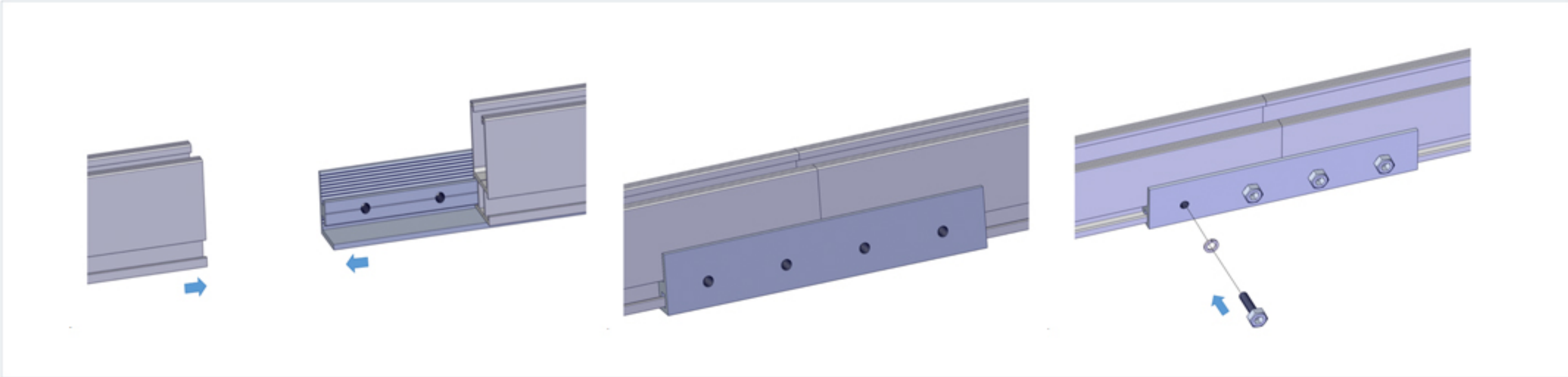
■ INSTALLATION GUIDE

**For detailed instructions please refer to the Dual Rack installation guide*

Dual Rack proudly presents the Splice Bar, reinforcing our legacy of robust and enduring photovoltaic (PV) module mounting solutions. Continuing the tradition set by our acclaimed rails, the Dual Rack Splice Bar is designed with precision and durability in mind. Crafted from top-quality materials, including a corrosion-resistant blend of aluminum and stainless steel, this component ensures reliable connections that withstand the test of time.

Much like our Universal End Clamps and Channel Strut, the Splice Bar upholds the industry-leading standards set by Dual Rack for strength and competitive pricing. Streamlined installation remains a hallmark, allowing for reduced installation costs and hassle-free mounting. Just like the versatility offered in our other solutions, Dual Rack Splice Bars cater to diverse solar project configurations, providing flexibility and reliability in every installation. Choose Dual Rack for connections that redefine excellence and embody the strength of your solar investments.

SPLICE BAR



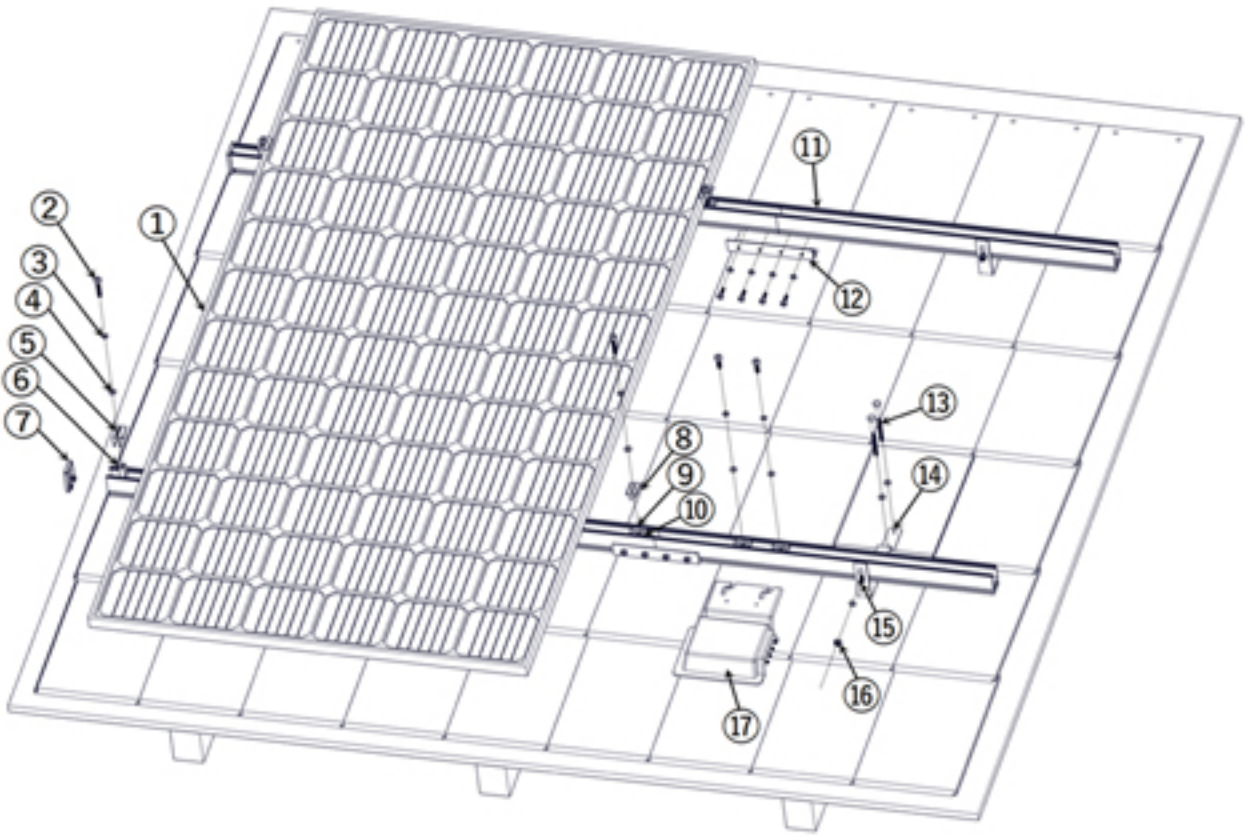
1. Install Splice:


Slide the splice halfway onto the rear side of the base rails. Insert the next rail section, maintaining a 1/8" gap between rail ends.
2. Expansion Joint Functionality:

Combining two rails with the splice provides an expansion joint. Choose between thermal expansion or rigid joints based on the installation area.


3. Secure with Self-Tapping Screws:

Tighten the second self-tapping screw to the rail, leaving it loose for rail expansion/contraction. For a rigid joint, fully tighten all self-tapping screws into the rail.







① Solar Panel




② Dual Hex Bolt




③ Lock Washer




④ Flat Washer




⑤ Universal End Clamp Top




⑥ Universal End Clamp Base




⑦ Standard Rail End-Cap




⑧ Mid Clamp Top




⑨ Channel Strut Floater




⑩ Channel Strut Base




⑪ Standard Rail




⑫ Splice Bar




⑬ Flash L Kit-5 Inch Lag Bolt




⑭ Flat Tile Roof Hook



⑮ T-Bolt




⑯ Flange Nut



⑰ Inverter

* End Clamp, Mid Clamp and Channel Strut are pre-assembled and can be detached as top, base and other accessories such as washer and floater showing in the installation guide.

Contact Info



Dual Rack Inc.

2290 Agate ct. Unit A-B, Simi Valley, CA, 93065

www.DualRack.net

Email: info@DualRack.net

Phone: +1 (805) 254 - 2250

